

INSTALLATION CHEATSHEET

**Provide to your installing
technician prior to EMS
handover training**



Installation Requirements	AIRFLOW Device	Station DW-048B	Station+ DW-048A (with independent water supply)
AIRFLOW Prophylaxis Master FT-229	⊞ ⊚ ⚡	⊞ ⊚ ⚡	⊞ ⊚
AIRFLOW One FT-230	⊞ ⚡	⊞ ⚡	

Key: ⊞ Air ⊚ Water ⚡ Power

Please read the AIRFLOW Prophylaxis Master or AIRFLOW One Instructions for Use carefully prior to use. This document does not replace these Instructions. The instructions for use are available for download in PDF format at www.myems.dental using the Product/Key Code FT-229 (AIRFLOW Prophylaxis Master) or FT-230 (AIRFLOW One). It is essential to first read and understand all the instructions for use before operating the device and using the related accessories.

- Equipment included with the purchase of your AIRFLOW Prophylaxis Master or AIRFLOW One:
 - Hose EH-142 for air, with quick coupling for the AIRFLOW device
 - Hose EG-110 for water, with quick coupling for the AIRFLOW device



Water hose
EG-110

Air hose
EH-142



⚠ The use of cables and accessories other than those supplied by EMS may negatively affect EMC performance. Use only parts supplied by EMS.

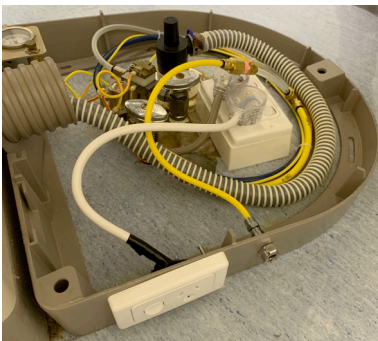
- To be provided by the installing technician (please request that your technician supply this during installation):
 - Quick connectors for the air (without shut-off valve) and water (with shut-off valve) plugs (Example air quick connector - 1/4" Poly Q.D. without shut-off, Male)



Example quick connector

- **POWER SOURCE:**
 - Voltage: 100-240
 - Vac Frequency: 50 to 60 Hz
 - Operating current: 4 A max
 - Class-I insulating system - requires protective earth (DO NOT INSTALL the device if your dental practice does NOT have protective earth). Plug the device only into an F1 protected mains supply. Check that the rated voltage of the device is suited for the local line voltage to prevent damaging the device, risk of fire and electric shock.
- **COMPRESSED AIR SOURCE** - Please make sure it is NON-REGULATED
 - Pressure: as close to 6 bar as possible (min 5.5 bar, max 7 bar)
 - Dry air. Max. humidity: 1.032 g/m³

- **WATER SOURCE** – Filtered drinking water
 - Pressure: 2 to 5 bar
 - Temperature: 10°C to 30°C
- **IMPORTANT INFORMATION:**
 - Please make sure the connectors for your air and water are different, so they cannot be switched (flooding your unit due to incorrect connectors is NOT covered by your EMS warranty).
 - Ideally, the air/water connections and the powerpoint should be located in close proximity and at the base of the dental chair (see example below)
 - If an existing water connection is present and not needed, please conceal the connection
 - For dental practices with a Station or Station+, please do not dispose of the allen key (Torx Key T20) that is included with your Station or Station+. There are two magnets located under the Station and the allen key must remain there at all times when not in use. If you are unable to locate the magnets, please contact your local EMS Clinical Product Specialist
 - For customers with a Station or Station+ please remember to screw your AIRFLOW device to the Station or Station+
- **IDEAL POSITIONING**



Please ensure you comply with Australian and New Zealand guidelines and use a body protected circuit

EMS Electro Medical Systems Oceania

Unit 1, Building 4 – Sydney Corporate Park

160 Bourke Road, Alexandria NSW 2015, Australia

Tel. +61 477 666 766

Email. info@ems-oceania.com Website. www.airflowdentalspa.com.au